



DINESH NAGAR
A Bond of Trust

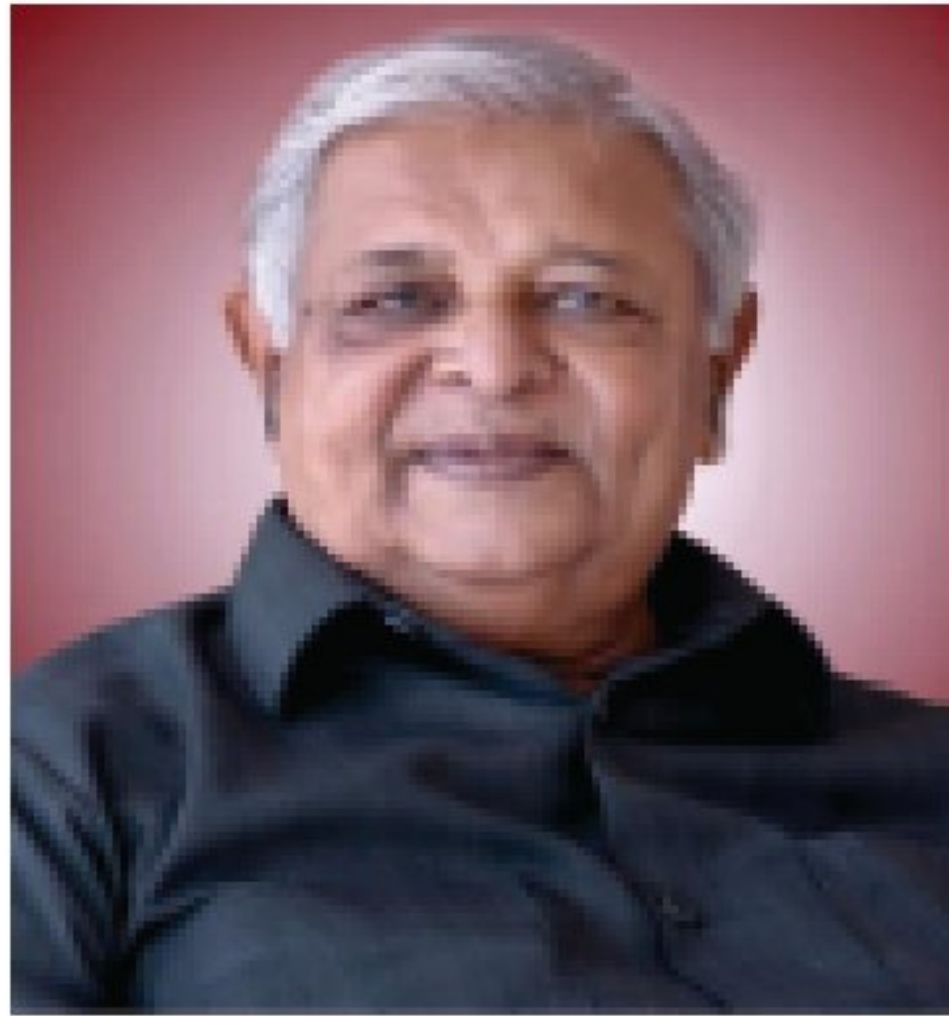
DINESH NAGAR

Delhi-Hapur Road, NH-24

Actual site Photograph



“प्रधानमंत्री का सपना, सबका घर हो अपना”



Late Shri Dinesh Chand Garg
5 Jan 1934 - 20 Jan 2013
Founder of Garg Group

A LEGACY OF EIGHTY YEARS



GARG GROUP

SHRI D.C GARG was THE FIRST MAYOR OF GHAZIABAD AND SERVED

TWO TERMS FROM 1997 - 2007

HE WAS ALSO THE FIRST CHARTERED ACCOUNTANT OF GHAZIABAD AND AUTHOR

AND PUBLISHER OF MANY TAXATION BOOKS THAT ARE PUBLISHED TILL DATE.

HIS BELIEF IN BUSINESS AS INSTRUMENT OF NATIONAL SERVICE AND HIS VALUES OF SIMPLICITY, MORALITY, TRUST ADAPTABILITY ARE THE CORE ETHOS OF THE GROUP AND ARE STILL BEING CARRIED OUT.

Garg Group

Real Estate Vertical-



Commencement of Landcraft River Heights, a 18.7-acre Group Housing located in Raj Nagar Extn, GHAZIABAD
No. of Apartments: 1095
Built-up Area: Approx 10 Lacs sq.ft.



Commencement of Landcraft GolfLinks, NH-24, GHAZIABAD—a 92-acre Lifestyle Township. When complete, GolfLinks will be home to more than 25,000 people.



Garg Group commences Dinesh Nagar, PILKHUWA. A landmark project with 1444 apartments in affordable housing segment. The Group launched the lowest priced Apartment in NCR at Rs. 4.5 lacs.



Launch of The Center Court, GURGAON, a first-of-its-kind concept of Sports Style Residences at Dwarka Expressway.



Under the Samajwadi Awas Yojna of UP Government and to benefit the Middle Income Group, Landcraft Developers has launched two affordable housing projects:
• LandCraft Metro Homes
• New Saket



Landcraft Metro Homes is a strategically located, affordable housing project in Ghaziabad. It is located on the main NH-58 and has many advantages like:
– Proposed Eastern Peripheral highway, just 1 km away
– Metro Station, just 10 Km away
– 24-hour Transportation facility available outside
– Renowned colleges & schools located nearby



New Saket is first-of-its-kind, budget housing project located only 4 kms away from Saket—the posh locality of Meerut.

Other Field Of Activities-

Institutions

- Krishna Institute of Engg. & Tech
- Krishna Engg. College
- Inderprastha Engg. College

Publications

- Law & Management House
- ReMadhav Publication

Social

- Dia Initiative
- Dia Skills
- My Parliament

Iron & Steel

- Ravi Iron Limited



प्रधानमंत्री जन आवास योजना

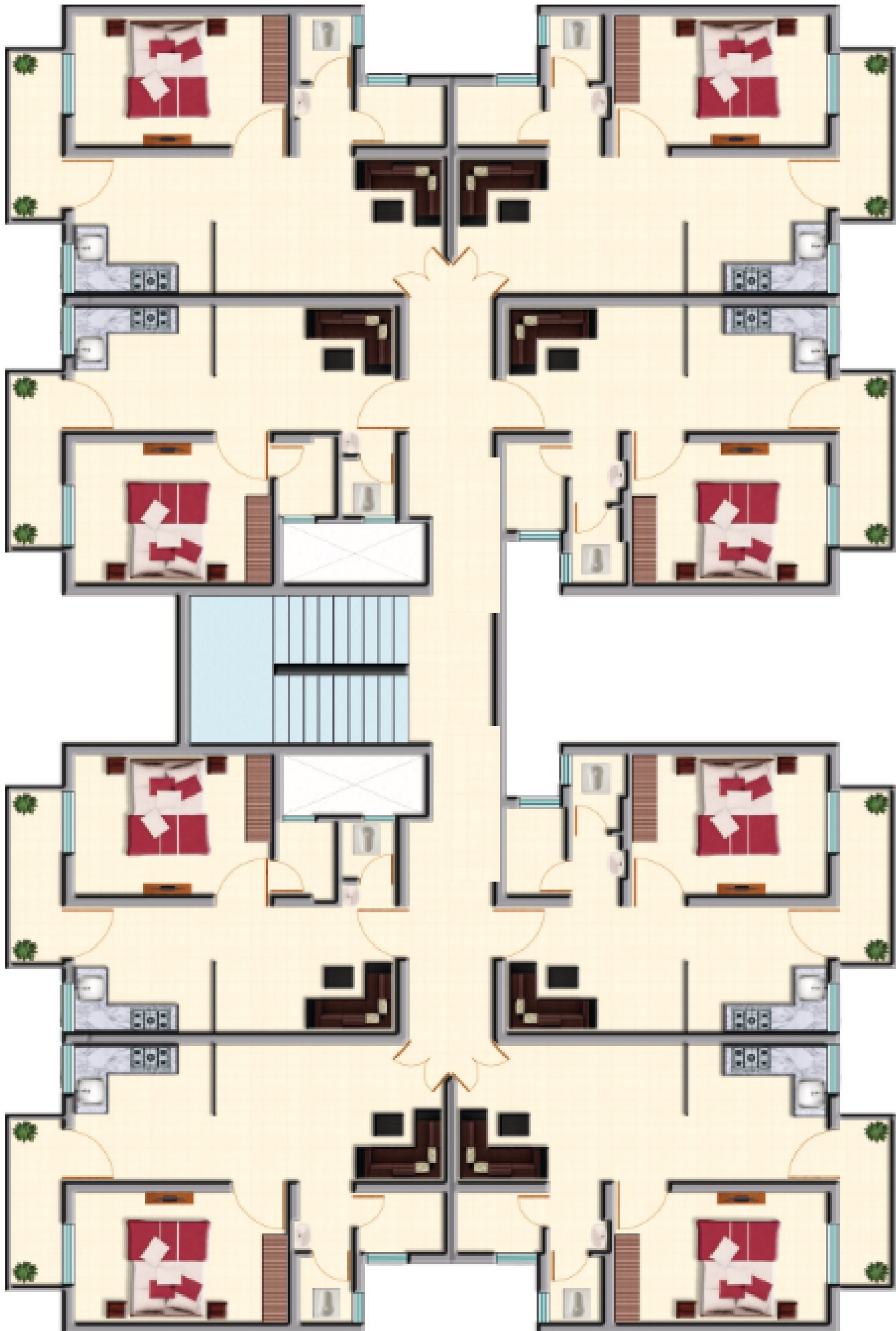
सरल निवास, सफल विकास

Features of Pradhan Mantri Awas Yojana - Housing for All, 2022

- For income up to 6 lacs p.a., interest subsidy @ 6.5% on loan amount of 6 lacs for maximum 15 years or actual term, whichever is lower.
6 लाख रुपये वार्षिक आय तक, 6 लाख रुपये ऋण धनराशि पर ब्याज की सब्सिडी 6.5 प्रतिशत की दर पर अधिकतम 15 वर्षों की अवधि या ऋण अवधि इसमें जो भी कम हो।
- For income up to 12 lac p.a., interest subsidy @ 4% on loan amount of 9 lacs maximum 20 years or actual term, whichever is lower.
12 लाख रुपये वार्षिक आय तक, 9 लाख रुपये ऋण धनराशि पर ब्याज की सब्सिडी 4 प्रतिशत की दर पर अधिकतम 20 वर्षों की अवधि या ऋण अवधि इसमें जो भी कम हो।
- For income up to 18 lac p.a., interest subsidy @ 3% on loan amount of 12 lacs maximum 20 years or actual team, whichever is lower.
18 लाख रुपये वार्षिक आय तक, 12 लाख रुपये ऋण धनराशि पर ब्याज की सब्सिडी 3 प्रतिशत की दर पर अधिकतम 20 वर्षों की अवधि या ऋण अवधि इसमें जो भी कम हो।
- Maximum subsidy amount Rs. 2.67 lakhs (approx.)
अधिकतम सब्सिडी लगभग 2.67 लाख होगी

* As per Pradhan Mantri Awas Yojna (Urban) Housing for all Credit Linked Subsidy Scheme for EWS/LIG/MIG operational guidelines January 2017 and amendment in guidelines G.O No. I-11016/15/2016-HFA-4, dated 11.03.2017 and G.O No. N-11027/19/2015-HFA-1/FTS-12985, dated /27.6.2017

CLUSTER PLAN



TYPE - A
300.sq.ft
CARPET AREA

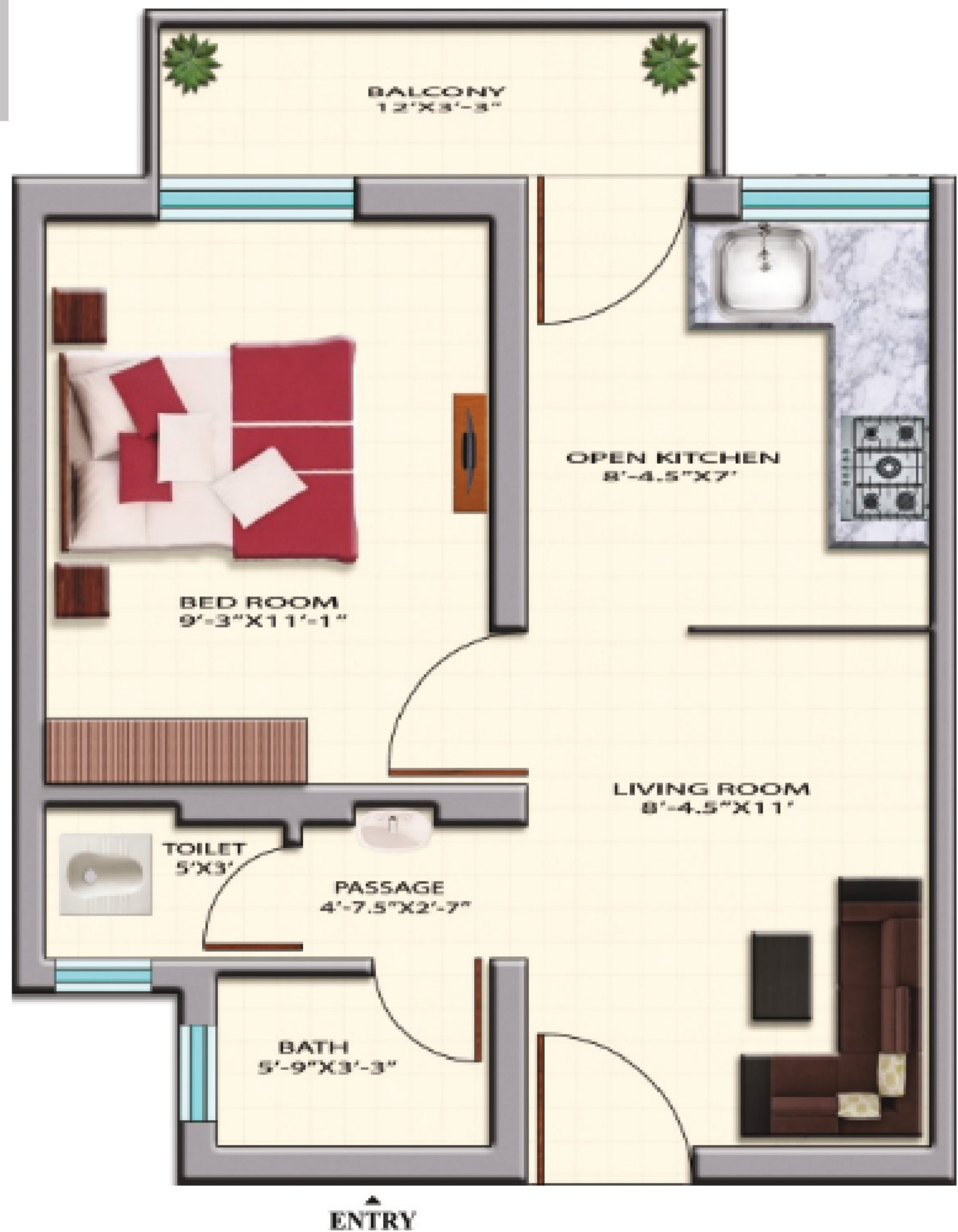


1 Bedroom, Kitchen, Living Room
Toilet, Bathroom, Balcony

TYPE - B

315.sq.ft

CARPET AREA



1 Bedroom, Kitchen, Living Room
Toilet, Bathroom, Balcony

TYPE - C

356.sq.ft

CARPET AREA



1 Bedroom, Kitchen, Living Room
Toilet, Bathroom, Balcony